

BUILDING TOMORROW'S INDUSTRY

Company
profile

**"WHERE THE
INDUSTRY OF
TOMORROW
TAKES SHAPE"**



Company
profile



INDEX

6-9 IDROMACCHINE SPA

- History
- Figures
- Organogram

10-13 THE PLANT

14-15 LOGISTICS

18-37 ACTIVITIES

- Plant Engineering
- Boilers and Pressure Equipments
- Shipbuilding
- Offshore

40-42 CERTIFICATIONS AND MATERIALS

COMPANY HISTORY



Idromacchine Spa was established in 1969 in Porto Marghera (VE). The company is one of the most important plant manufacturers in Italy due to the organization and the potential of its production plant, which allow the manufactured products to be shipped by sea.

Idromacchine develops, constructs and installs plants for leading national and international companies.

Thanks to the considerable experience gained over fifty years, to the considerable investments in instrumental activities, and to its programming and coordination abilities, today Idromacchine is a leader in the construction and maintenance of industrial plants.

NUMBERS

50

years of experience

280

specialized employees

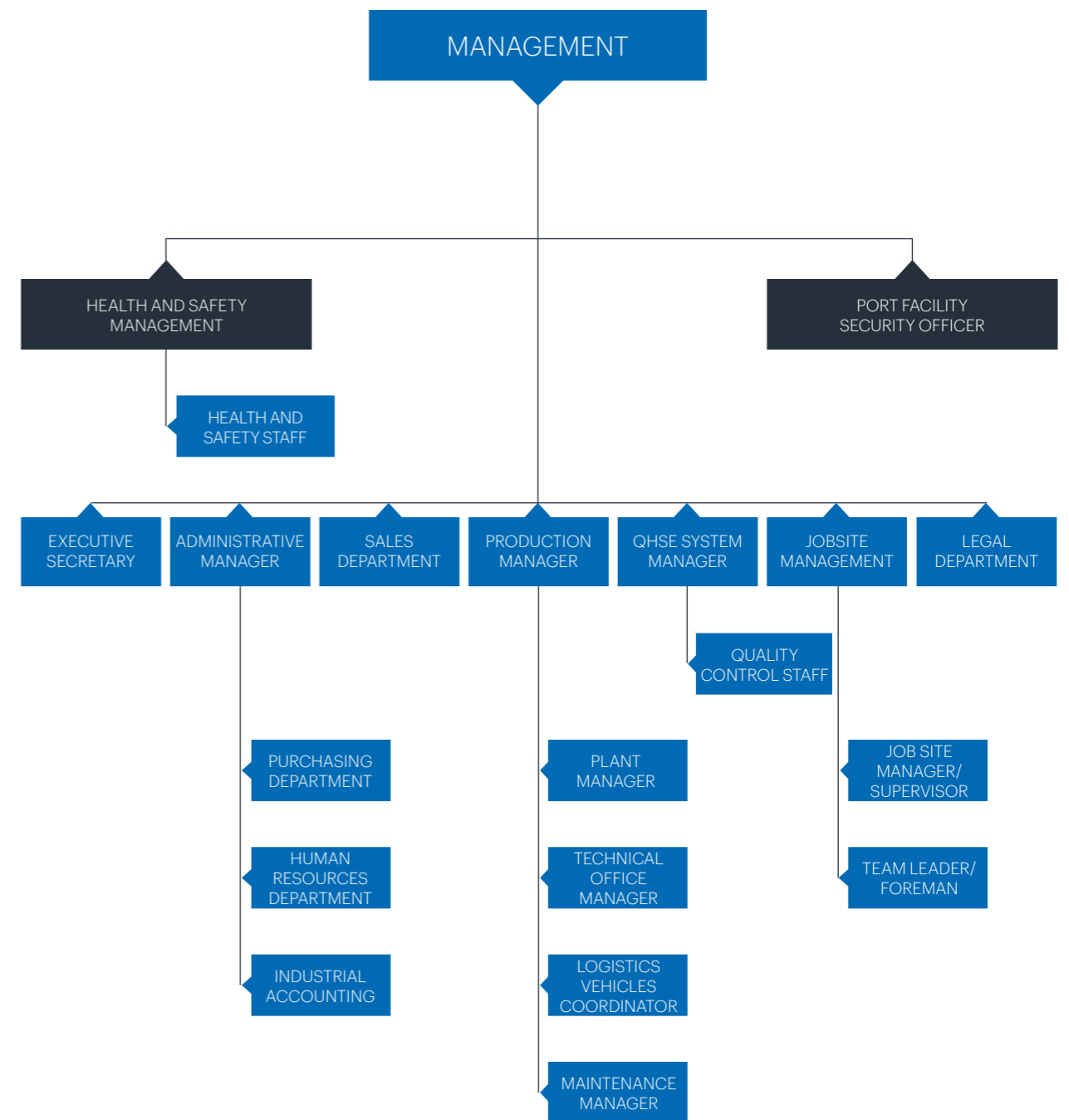
+2.000

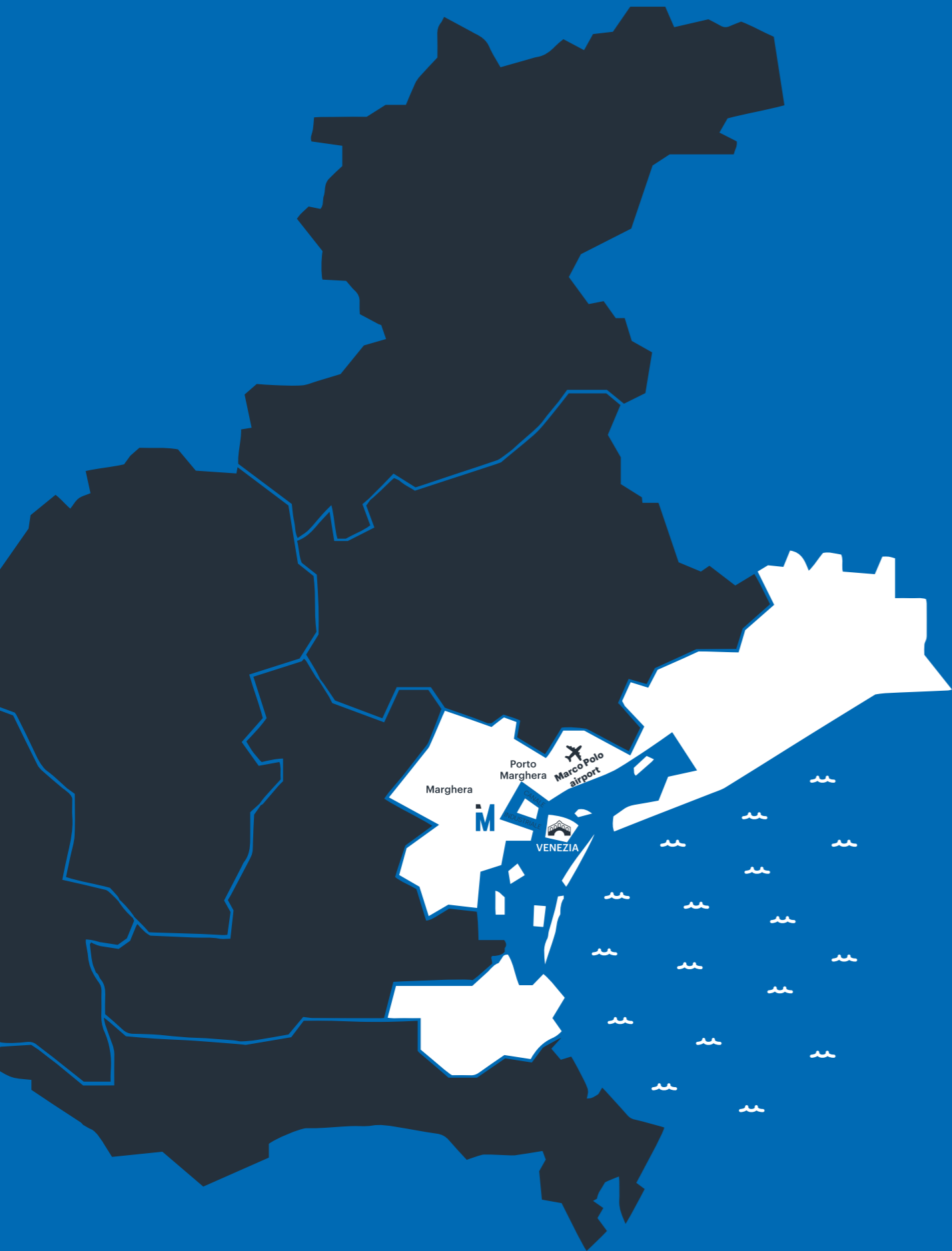
projects completed

72.000 m²

plant

CORPORATE STRUCTURE





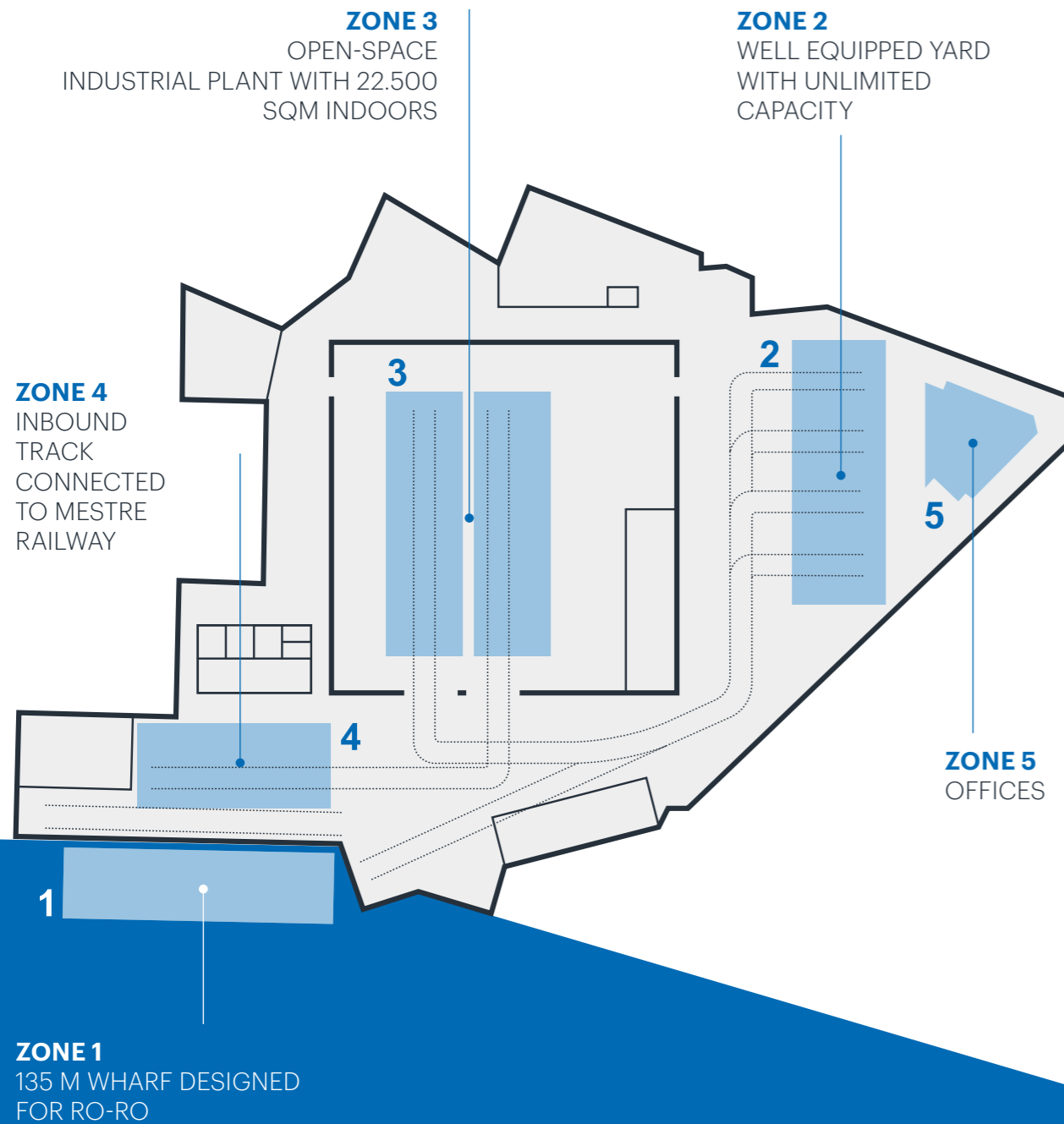
PORTO MARGHERA

THE AREA

The Idromacchine production plant (plant terminal), located in Porto Marghera (VE), is a 75.000 SQM area, 22.500 SMQ of which are covered. It has offices, warehouses and all kinds of utilities.

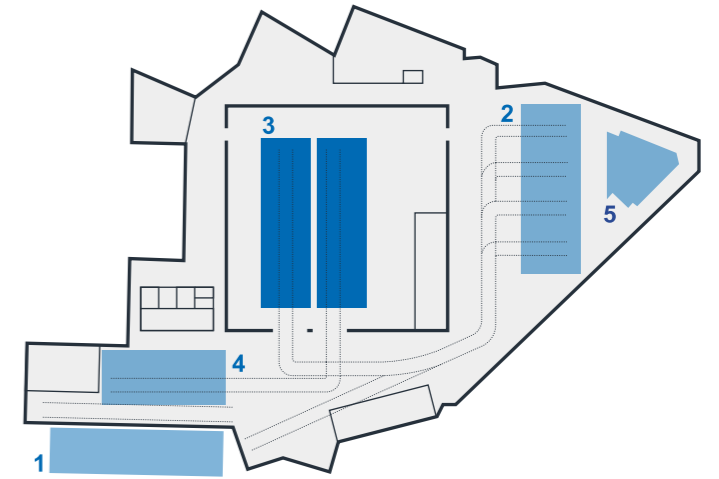


STABILIMENTO



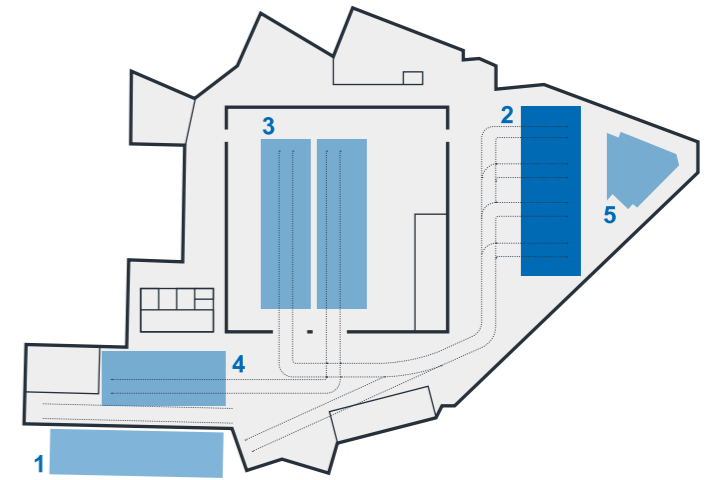
COVERED AREA

The covered area is divided into nr. 6 150 m wide spans equipped with 22 bridge cranes with lifting capacities ranging from 10 t to 100 t, as well as with other lifting means.



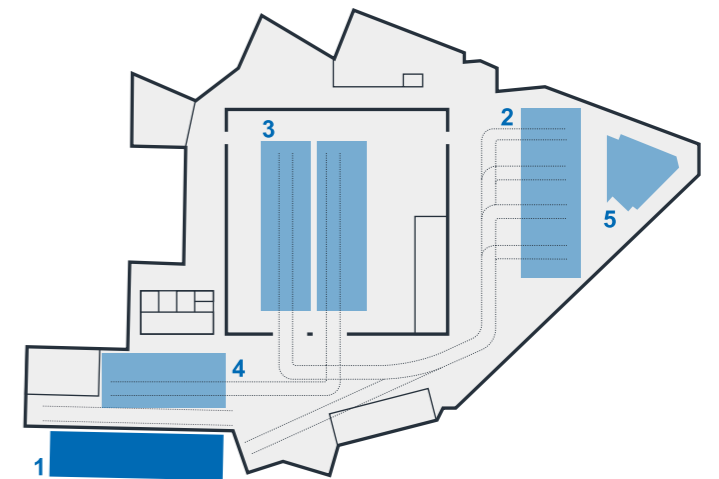
EXTERNAL AREA

The 55 x 118 m reinforced concrete external yard bears loads of up to 100 t per square meter.



DOCK

Idromacchine Spa has a 135 m x 20 m dock with Ro-Ro ramp and a 135 m x 25 m expanse of water located on the Porto Marghera West Industrial Canal. The infrastructure includes a 50 t crane with an outreach of 35 m.



LOGISTICS

THE PLUS



RAILWAY CONNECTION

The plant has a railway link connected to the Mestre (VE) Railway station and the port of Marghera (VE).



ROAD CONNECTIONS

The plant is located on a road with a direct connection to the Mestre (VE) ring road.



LIFTING EQUIPMENT

Idromacchine has a significant fleet of lifting equipment consisting of 21 mobile cranes with lifting capacities ranging from 30 to 450 tons. This availability guarantees very high assembly capacities without involving third parties. In addition, each operation, particularly those involving special components, are supported by engineering studies and the drafting of specific lifting plans by the in-house technical and safety department, enabling any type of assembly operation to be executed with the highest safety standards in chemical, petrochemical, and power plants.



What we do

ACTIVITIES

Its high level of expertise enables Idromacchine to successfully compete in several areas: from plant engineering to shipbuilding, from offshore to boiler manufacturing and heavy metalwork. In all these fields, Idromacchine carries out both construction and

maintenance work, including also multidisciplinary activities, that is, coordinating the work of specialized third parties necessary for the execution of the job. This translates into a highly efficient service for the client, as it offers a single contact point and contract.



IDROMACCHINE IS A LEADING COMPANY IN THE FOLLOWING ACTIVITIES:

- CONSTRUCTION, ASSEMBLY, AND MECHANICAL AND ELECTRO-INSTRUMENTAL MAINTENANCE OF INDUSTRIAL PLANTS
- CONSTRUCTION OF LARGE INFRASTRUCTURAL, MARINE AND ONSHORE/OFFSHORE INSTALLATIONS

FOR THE BOILERS AND PRESSURE EQUIPMENT AND HEAVY METALWORK SECTORS:

- | | | |
|--|---|---|
| <ul style="list-style-type: none"> ➤ DESIGN, PRODUCTION, INSTALLATION, MAINTENANCE AND REPAIR OF PIPING SYSTEMS FOR INDUSTRIAL AND MARINE INSTALLATIONS | <ul style="list-style-type: none"> ➤ CONSTRUCTION AND ASSEMBLY OF COMPLEX "TURNKEY" PLANTS FOR THE CHEMICAL AND PETROCHEMICAL INDUSTRY AND THERMOELECTRIC POWER PLANTS | <ul style="list-style-type: none"> ➤ ORDINARY AND EXTRAORDINARY PLANT MAINTENANCE, REVAMPING, REFITTING, SCHEDULED PLANT SHUTDOWN ACTIVITIES |
|--|---|---|

Idromacchine takes care of plant maintenance design and programming phases and carries out maintenance activities ensuring quality and operational safety, always respecting the agreed deadlines for the return of the plant to normal working conditions.

ACTIVITIES

PLANT

ENGINEERING



The construction and the mechanical, electrical and instrumental assembly of “turnkey plants”, from the development to the detailed engineering phase, up to commissioning and support services, are among Idromacchine Spa’s main industrial activities. The company’s organizational abilities and its resources in terms of equipment and vehicles allow even large worksites to be opened and maintained for the execution of scheduled and extraordinary maintenance activities, with plants in operation or shut down, as well as revamping and repowering. Idromacchine Spa guarantees top quality work and on time delivery of commissioned works while always ensuring the highest safety standards in the work environment.

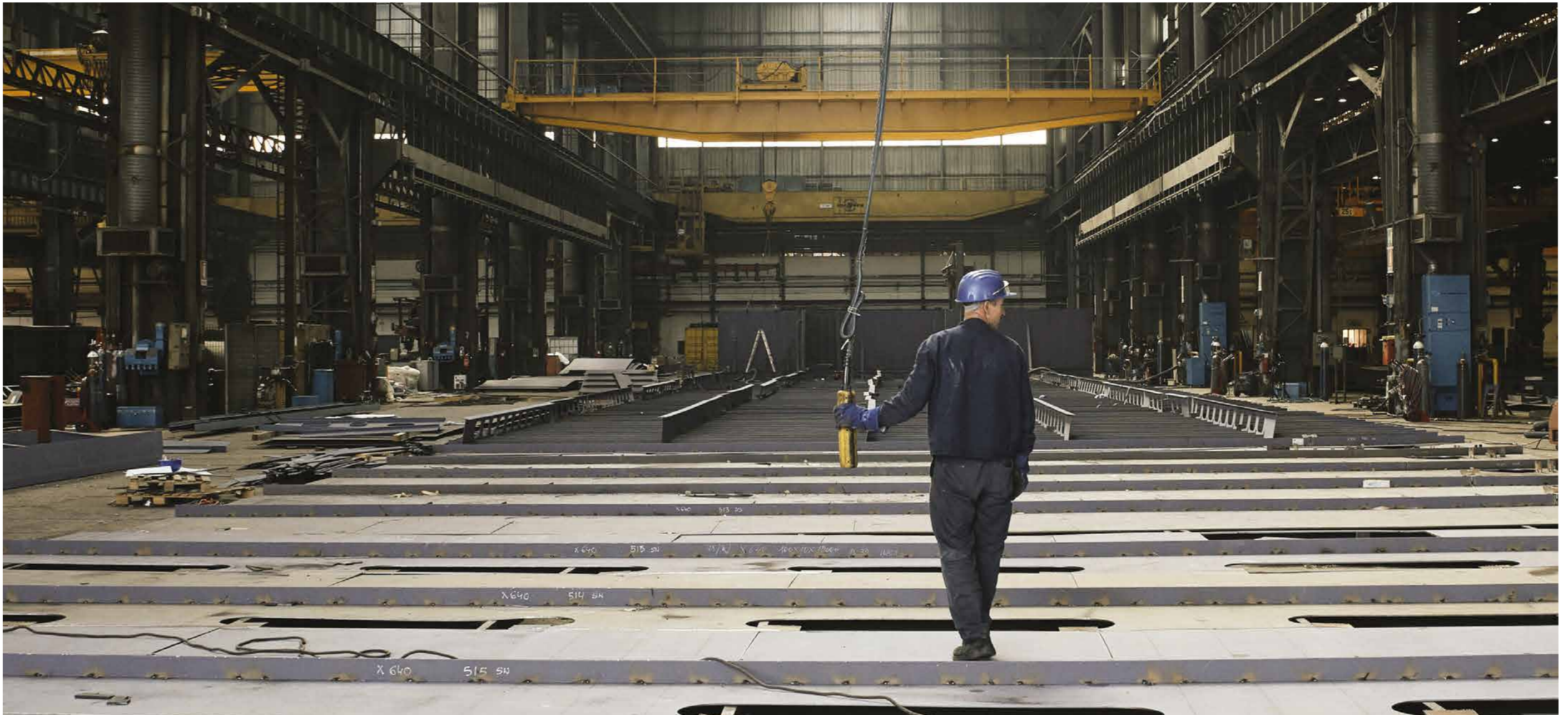


IN PLANT ENGINEERING, IDROMACCHINE OFFERS:

- ⊕ CONSTRUCTION AND ASSEMBLY OF HEAVY AND MEDIUM AS WELL AS NONSTRUCTURAL STEELWORK
- ⊕ CONSTRUCTION AND ASSEMBLY OF CARBON STEEL, ALLOY AND STAINLESS STEEL PIPES
- ⊕ REVAMPING OF PLANTS
- ⊕ PROGRAMMED MECHANICAL / ELECTRO-INSTRUMENTAL MAINTENANCE
- ⊕ PROGRAMMED SHUTDOWNS
- ⊕ "SPECIFIC" INTERVENTIONS

IDROMACCHINE OFFERS GENERAL CONTRACTOR SERVICES IN CONSTRUCTION, ASSEMBLY AND MAINTENANCE OF:

- ⊕ CHEMICAL AND PETROCHEMICAL PLANTS
- ⊕ HYDROELECTRIC AND THERMOELECTRIC PLANTS
- ⊕ GAS POWER PLANTS AND EXTRACTION WELLS
- ⊕ ALUMINUM PRODUCTION PLANTS
- ⊕ GLASS PRODUCTION PLANTS
- ⊕ PLANTS FOR THE TEXTILE INDUSTRY
- ⊕ AIR SEPARATION PLANTS
- ⊕ GAS SEPARATION PLANTS



ELECTRICAL AND INSTRUMENTATION SYSTEMS



Idromacchine is an expert partner for the design and construction of electrical and electronic instrumentation systems for all sectors.



AUTOMATION

- ⊕ ELECTROMECHANICAL AUTOMATION.
- ⊕ ELECTRONIC AUTOMATION WITH PROGRAMMABLE LOGIC, NUMERICAL CONTROLS
- ⊕ INTEGRATION BETWEEN AUTOMATIC SYSTEMS AND PCS
- ⊕ WIRING OF MACHINES



ELECTRICAL SYSTEMS

- ⊕ INDUSTRIAL AND CIVIL INSTALLATIONS FOR MOTIVE POWER LINES
- ⊕ ELECTRICAL SYSTEMS FOR PROTECTION, MANEUVERING, COMMAND AND CONTROL FOR THE INDUSTRIAL, TERTIARY, AND CIVIL SECTORS
- ⊕ INDUSTRIAL LIGHTING SYSTEMS
- ⊕ ATMOSPHERIC DISCHARGE PROTECTION SYSTEMS
- ⊕ SYSTEMS FOR TRANSFORMER SUBSTATIONS
- ⊕ INSTALLATION OF MEDIUM VOLTAGE CELLS
- ⊕ ELECTRIC DISTRIBUTION PANELS FOR MOTIVE POWER AND LIGHTING
- ⊕ POWER CENTER PANELS
- ⊕ CONTROL AND PLC PANELS WITH PRODUCTION CYCLE SUPERVISION
- ⊕ LOAD MANAGEMENT AND CONTROL PANELS WITH PLC
- ⊕ AUTOMATIC POWER FACTOR CORRECTION PANELS
- ⊕ INVERTER CONTROL PANELS



ENGINEERING

Design, technical management, testing and commissioning of:

- ⊕ ELECTRICAL SYSTEMS FOR CIVIL AND INDUSTRIAL MOTIVE POWER AND LIGHTING
- ⊕ ELECTRICAL INSTALLATIONS IN AREAS AT RISK OF EXPLOSION AND FIRE
- ⊕ ATMOSPHERIC DISCHARGE PROTECTION SYSTEMS
- ⊕ FIRE DETECTION SYSTEMS
- ⊕ ANTI-INTRUSION SYSTEMS

ACTIVITIES

BOILERS AND PRESSURE EQUIPMENTS



The plant includes a terminal and an autonomous dock enabling Idromacchine to construct large components or completely assembled plants, of almost unlimited size and weight, and to ship them directly by sea.



IDROMACCHINE'S TYPICAL PRODUCTION FOR THE BOILERS AND PRESSURE EQUIPMENTS SECTOR INCLUDES:

- ⊕ EXHAUST STACKS
- ⊕ PIPES
- ⊕ CONSTRUCTION OF TRANSFER LINES IN ALL TYPES OF MATERIALS
- ⊕ CONSTRUCTION OF ATMOSPHERIC TANKS
- ⊕ CONSTRUCTION OF TANKS OR PARTS
(bottom, gunwale, casing or part of it, fixed or floating roof)
- ⊕ CONSTRUCTION OF PRESSURE VESSELS
- ⊕ HEAT EXCHANGERS
- ⊕ FURNACES
- ⊕ BOILERS OR LOOSE PARTS
(cylindrical bodies, elements, tube bundles, structural metalwork)
- ⊕ COLD BOX
- ⊕ PRESSURE TANKS
- ⊕ COLUMNS
- ⊕ REACTORS
- ⊕ EXCHANGERS
- ⊕ DEAERATORS
- ⊕ ABSORBERS
- ⊕ HYDRAULIC GUARDS
- ⊕ AIR-COOLERS
- ⊕ GAS RECUPERATORS
- ⊕ PREFABRICATED
TANKS AND SILOS



ACTIVITIES SHIPBUILDING



Idromacchine is authorized to construct ships and floating structures and is able to supply "turnkey" specialized marine units, prefabricated and pre-equipped sections and blocks of considerable dimensions, ready for assembly in the dry docks indicated by the client.



IDROMACCHINE'S TYPICAL PRODUCTION FOR THE NAVAL SECTOR INCLUDES:

- ⊕ LARGE METAL STRUCTURES (steel and L.L.)
- ⊕ MOBILE ROAD BRIDGES (swivel and retractable)
- ⊕ BARRIER GATES AND REGULATION
- ⊕ NAVIGATION CONCHE
- ⊕ CONSTRUCTION OF DEHALERS ASSEMBLY
- ⊕ CONSTRUCTION ASSEMBLY LARGE TANKS FOR LIQUID GASES
- ⊕ CONSTRUCTION ASSEMBLY WATER TREATMENT PLANTS
- ⊕ PRE-FABRICATION PANEL MODULES
- ⊕ PREFABRICATION NAVAL SECTIONS
- ⊕ HULLS



Prefabrication cruise ship sections.

ACTIVITIES OFF-SHORE



Idromacchine is highly specialized in the construction of onshore and offshore plants.

The pride of the company is the construction, assembly and commissioning of the "MO.SE" prototype, the Experimental Electromechanical Module designed to protect Venice and the lagoon from high tides.



IDROMACCHINE'S TYPICAL PRODUCTION FOR THE ONSHORE AND OFFSHORE SECTORS INCLUDES:

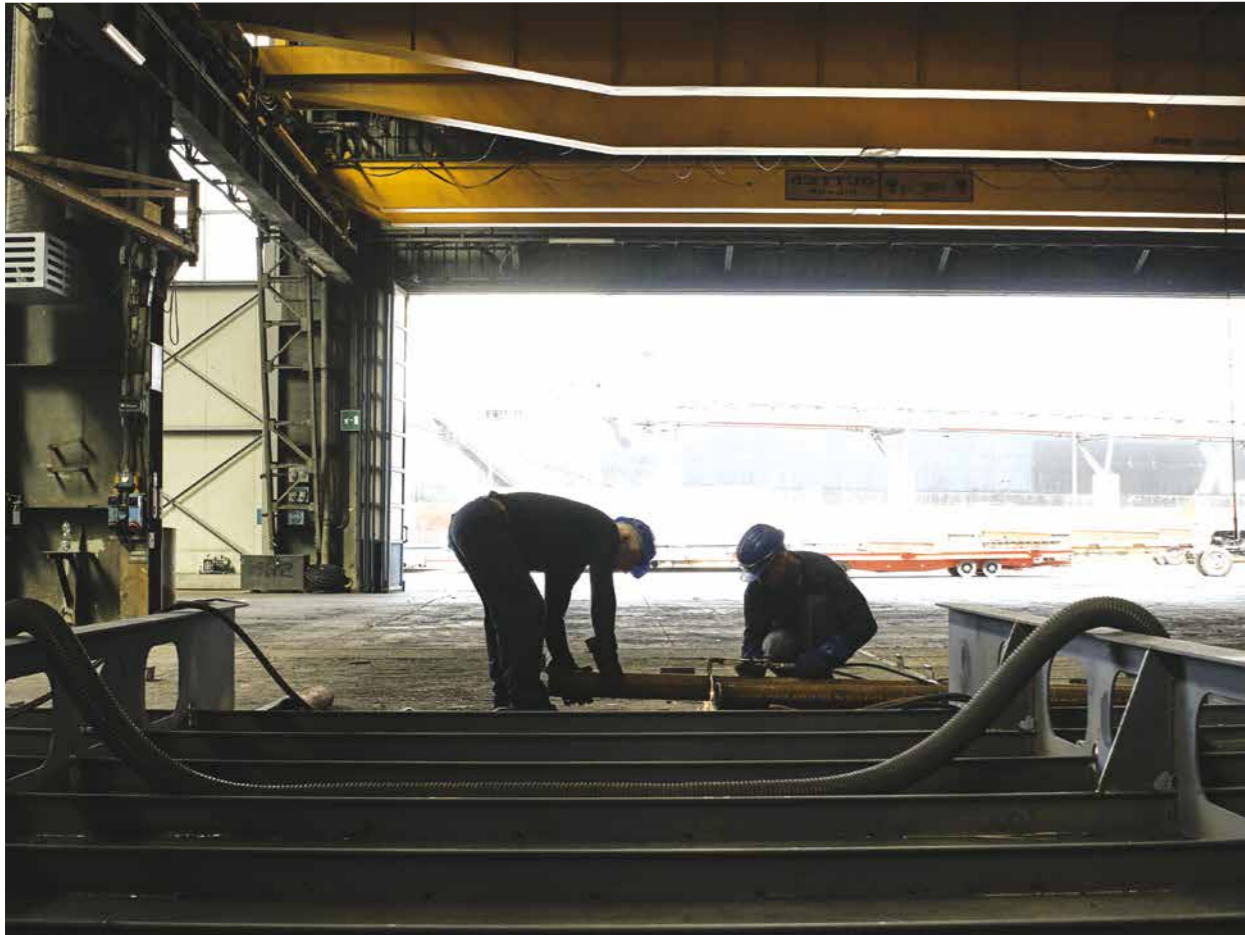
- ⦿ LARGE BARRIERS
- ⦿ CONSTRUCTION, ASSEMBLY AND COMMISSIONING OF PLATFORMS AND JACKETS
- ⦿ CONSTRUCTION OF EQUIPMENT FOR ON-SHORE AND OFF-SHORE PLANTS

“MO.S.E.” PROTOTYPE



Among the most prestigious companies in this sector, Idromacchine can boast the construction, assembly and launching from its quay of the "MO.S.E." prototype, the Experimental Electromechanical Module for the regulation of the waters of the Venice lagoon, for which Idromacchine owns the patents related to the articulated joints.





WARRANTY AND CERTIFICATIONS

UNI EN ISO 14001

Idromacchine is certified according to the UNI EN ISO 14001 standard.

UNI EN ISO 45001

Idromacchine is certified according to the UNI EN ISO 45001 standard.

UNI EN ISO 9001/2015

Idromacchine is certified according to the UNI EN ISO 9001/2015 standard.

UNI EN ISO 3834

Idromacchine possess the quality requirements for the fusion welding of metallic materials.

UNI EN ISO 1090

Idromacchine owns the factory production control compliance certificate.

IMO e I.S.P.S. Code

In 2004 Idromacchine met the safety standards for ports established by the IMO standards and by the ISPS Code.

Idromacchine is a certified electrical systems installation company.

REGULATIONS

Idromacchine operates in full compliance with the following regulations.

- | | | | |
|------------------|----------------|---------|-------------|
| ASME VIII DIV. 1 | ISPESL/VSR | PED | STOOMWENZEN |
| ASME VIII DIV. 2 | AD/MERKBLATTER | BS 5500 | SVIT/ASIT |

Idromacchine's in-house quality control and technical offices have been collaborating for over a decade with top engineering firms to guarantee the quality and reliability that have always distinguished the company's products and solutions.



THE QUALITY OF IDROMACCHINE'S PROCESSES AND PRODUCTS ARE CERTIFIED BY REPUTABLE INTERNATIONAL ORGANIZATIONS.

MAIN CONSTRUCTION MATERIALS USED



CARBON STEEL AND
ALLOY



STAINLESS
STEEL



SPECIAL
ALLOYS



ALUMINUM
ALLOYS



NICKEL
ALLOYS



IDROMACCHINE
BUILDING TOMORROW'S INDUSTRY

IDROMACCHINE SPA
Via dell'Elettricità n. 15/17
30175 – Porto Marghera (VE) - Italy
VAT 00183550276
www.idromacchine.it